

SHARP knows that innovation means nothing unless it helps make your life easier /**This is Why** the MX-4112N / MX-5112N are equipped with some of the most advanced features available, including our intuitive 'finger-swipe' control technology.

MX-4112N / MX-5112N Multi-Function Systems





**Class-leading
Touch-screen
Technology**



**Perfect for any
Busy Office or
Workgroup**

/This is Why our MX-4112N and MX-5112N are two of the most advanced A3 MFPs you can buy

Powering the digital office

The days of struggling to understand colour MFPs are coming to an end. Why? Because Sharp has added 'finger-swipe' control to two of the world's most productive A3 office multifunction systems.



Finger-swipe touch control for intuitive operation of every function

Anyone with a smart phone or tablet PC will already be familiar with finger-swipe technology. You simply touch the screen and slide or tap your finger for instant access to every feature, function and setting. There's no fuss and no confusion: just effortless productivity.

Total productivity for the entire team

Our finger-swipe control technology helps everyone get the full benefit of using one of these powerful MFPs. It gives them – as standard – fingertip control of A3 network printing and copying; rapid scanning; superb image quality and versatile document filing, all supported by industry-leading security. But why stop there?

You can boost productivity still further with sophisticated fax, a choice of high speed double-sided document feeders, and a huge range of professional finishing options. This could be the only MFP your office needs.

You can even add full internet access. So now your colleagues can browse for and print web content without the need for a PC. What's more, you can add Sharp OSA® to connect to the 'Cloud' and run Software as a Service (SaaS) applications developed by Sharp's Technology Partners.





**Retractable
Keyboard
Option**



**Optional
Saddle Stitch
Finisher**

/This is Why our MX-4112N and MX-5112N provide a smarter, faster way of working

Easy to use

As you'd expect from Sharp, we've made ease-of-use a major design priority with useful features such as dual USB ports for walk-up, driverless printing of PDF*¹, TIFF, XPS*², and JPEG files. You also get a wide range of document processing and handling tools, supported by on-screen 1 page, 3D and thumbnail previews. And, thanks to finger-swipe technology, you can touch and slide to rotate, re-order, delete and insert pages into the document before you start the print run. Each user can have a customised home screen with a choice of backgrounds and shortcuts to their most frequently used features and applications, and navigating from function to function is quick and intuitive. A retractable keyboard can be added for easy data entry.



'Walk-up Printing' thanks to convenient USB ports

A hub of productivity

Productivity starts with performance. And that's something the MX-4112N and MX-5112N have in abundance. Regardless of whether you're working in colour or black & white you'll be producing documents as fast as 51 or 41 pages per minute, and the first page will appear in under 5.7*³ seconds or 6.7*³ seconds, depending on the model.

Thanks to the DSPF (Duplex Single Pass Feeder) scanning can be as fast as 75 originals per minute, and a paper supply which can be expanded up to 5600 sheets gives you faster workflows with fewer interruptions.

Need variety? No problem! Now you can work with paper in sizes from A5 to A3 wide, with weights of up to 256 gsm. Creating large volumes of professionally presented documents is easy, too, thanks to a wide range of finishing options. Choose from a space-saving inner finisher for simple sorting and stapling, an A3 wide saddle stitch finisher, standard and high-capacity finishers with stapling, saddle stitching and booklet making capabilities and a variety of hole punch modules.

MX-5112N shown with optional inner finisher



*¹ Direct PDF printing requires optional MX-PK11.

*² Direct XPS printing requires optional MX-PUX1 and L80MXSM10.

*³ Best achieved time based on A4 copy, long-edge feeding from 1st paper drawer, using document glass when machine is ready, without Auto Colour Mode and Auto Colour Selection. May vary depending on machines conditions and operating environment.



Clear, Crisp Text,
Sharp Contrast and
Hi-fidelity Colour



Ultra-fine
1200 x 1200 dpi
Print Resolution

/This is Why our MX-4112N and MX-5112N can easily handle whatever you throw at them

Designed for the heaviest workloads

The 41 pages per minute (ppm) MX-4112N and the 51 ppm MX-5112N can cope with the heaviest workloads. And as well as having an inherently robust design, they come with a suite of sophisticated support and management tools to keep human intervention to a minimum: another plus for productivity.



10.1 inch, 3-way adjustable colour touch screen

In addition, Remote Access Control lets your support staff perform configuration, troubleshooting and ad hoc training across the network and the digital user guide can be accessed from the 10.1 inch colour touch screen, which tilts 3 ways for comfortable viewing.

Slick, stylish documents for any audience

A winning combination of true 1200 x 1200 dpi printing and our specially formulated toner with Resolution Enhancement Technology, produce the equivalent of 9600 x 600 dpi interpolated print and copy resolution.

Put another way, the quality is simply astonishing.

Small characters, even against complicated backgrounds, are clear and easy to read. An enhanced scanning capability gives you excellent brightness and sharp contrast. Colour sweeps are smooth and accurate – even with tricky blues and greens – and a built-in Auto Colour Mode means that no one has to worry about the technicalities of reproducing hi-fidelity colour.



Convenient filing

A 160 GB hard drive is provided for storing jobs (neatly indexed with thumbnail views) for later reuse. Choose from Quick Filing for temporary storage, Advanced Filing for long-term archiving, or a Main Folder for convenient workgroup sharing. Add the optional Mirroring Kit* and you'll get automatic backups, too.

* Requires optional MX-EB12.



**Copy Direct to
Memory Stick
via USB Ports**



**Powerful
Scanning
Capabilities**

/This is Why our colour scanners provide greater speed, power and flexibility

Perfect for today

The powerful scanning capabilities of these two new MFPs make it easy for everyone to capture, create, store and share information in digital form. You can scan directly to email, your desktop, network locations and USB memory sticks, in TIFF, PDF, Encrypted PDF, PDF/A and Compact PDF*¹, JPEG and XPS formats.



Sharp OSA
Network
Scanning Tool:
one-touch
scanning to
your PC

To distribute your scans, simply use the finger-swipe control interface to browse and select email contacts. Getting your own copy is even easier: a handy 'Scan to Me' function automatically emails the file to your inbox with a single touch. And with the documents on your PC, you can use Sharpdesk document management software, which lets you store and manage files of virtually any format.

All-in-one performance

Scanning really is first class. A resolution that's adjustable to 150 dpi lets you create smaller files without compromising clarity, and it's easy to adjust the contrast and sharpness to compensate for any 'difficult' documents.

Sharp's OSA Network Scanning Tool option*¹ provides one-touch, automated scanning to your PC or network drive through predefined and customisable scanning profiles. Scanned documents can quickly be printed, filed, previewed, shared, and stored, saving time and improving workflows.

Similar profiles can be used to control complex, often repeated print jobs.

Single sheet or
multiple sheet
document
scanning is
effortless.



Even high volume scanning is effortless thanks to thoughtful innovations that automatically stamp originals as they're scanned and skip blank pages entirely.

*¹ Requires optional MX-EB11.

*² Requires optional MX-AMX2.



**Finger-Swipe
Technology for
Easy Operation**



**Ideal for
Walk-up
Environments**

/This is Why our digital MFPs provide maximum uptime for total productivity

Advanced capabilities at your finger tips

The advanced finger-swipe interface will help even inexperienced users benefit from the MX-4112N and MX-5112N's full range of capabilities. Not only is the User Guide accessible in digital form direct from the control screen, but we've also maximised uptime with important support tools such as:

Web Page Management Every important setting can be managed through a standard web browser, including user access, security and other controls and configurations.

Sharp Remote Device Manager Installed on your file server, Sharp Remote Device Manager gives you centralised, real-time control of your networked printers and MFPs without leaving your desk. Error reporting, technical support, driver installation, firmware upgrades, printer configuration: everything is easier and more accessible.

Remote Diagnosis Solve issues before they become problems by monitoring your MFPs via your web browser, and receive timely email alerts when maintenance is required.

Printer Status Monitor Check the MFP's operating status from your PC before you start a job, to be sure there's sufficient toner and paper. As soon as your documents are ready an alert will appear on your desktop. It's easy.



Access User Manual directly from the MFP panel.

Job Status Screen A glance at the control panel's Job Status Screen will show you every copy and print job and their current position in the queue.

Remote Access Interface Lets you recreate the MFP's main control panel on your screen*, giving you the ability to operate every major function direct from your desktop.

* Requires VNC application.



Low Consumption Consumables



Carefully Designed Components Help Minimise Waste

/This is Why our digital MFPs are designed to support our environmental objectives

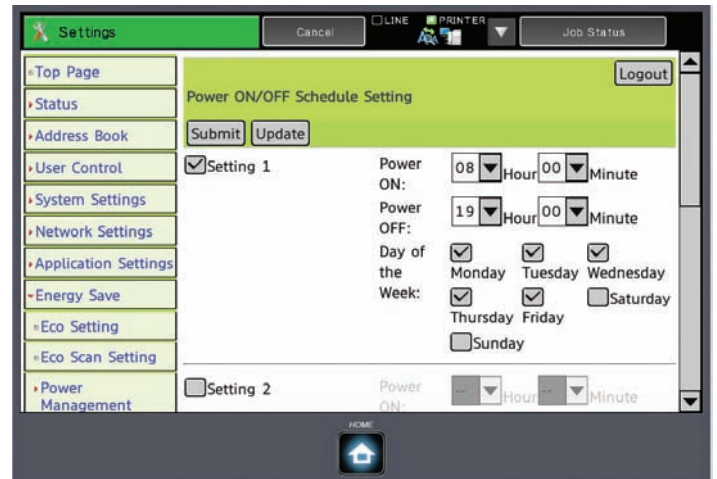
A responsible choice

These are two of the most environmentally responsible MFPs in their class, with everything – including consumables, power management and internal architecture – designed to minimise energy consumption and running costs.

Both machines are Energy Star-certified, their warm up times* are less than 30 seconds for the MX-4112N and 34 seconds for the MX-5112N, plus they use specially developed low consumption consumables and a long-life photoconductor.

In addition, their self-adjusting and pre-set auto shut down capabilities and a special Eco Scan Mode – which switches the fuser roller off whenever appropriate - help to reduce your energy consumption and save you money.

* At rated voltage. May vary depending on machine conditions and operating environment.



Pre-set MFP on/off times



Low energy LED scanning light



Both MX-4112N and MX-5112N qualify for Energy Star certification



Optional
Data Security Kit



Industry
Leading
Security

/This is Why our MX-4112N and MX-5112N include industry leading multi-layer security

Powerful multi-level security

Sharp MFPs incorporate some of the industry's toughest, multi-level security measures as standard. We start with password-controlled access for routine user authentication, and you can add a third party card reader for tighter control. But then we go further with secure network interfaces to defeat external threats, SSL and IPsec to encrypt and protect network traffic, and full IEEE 802.1X compliance for port-based network access control.

We guard against accidents, too, with features such as password protected PDFs, a Hidden Pattern Print feature which can reveal a watermark (e.g. 'CONFIDENTIAL NOT FOR COPY') and Confidential PIN Printing which requires the user to be present at the MFP before the print run can start.

For even greater security, choose the optional Data Security Kit*¹, which has a Document Control facility to prevent unauthorised copying, scanning, faxing and filing, plus the ability to encrypt and securely erase data from the hard disk and internal memory. When it's time to replace your MFP it's easy to completely and permanently remove all data from the device.

Ready for the future

As well as letting you upgrade with a wealth of finishing and productivity options, the MX-4112N and MX-5112N are ready to take advantage of the new working practices which will soon become commonplace.

You can add the latest version of Sharp OSA® (Open Systems Architecture), for example, and turn your MFP into gateway to applications*², on your network. But that's not all.

Sharp OSA can also reach beyond your firewall, letting you leverage the efficiency of Cloud computing services by giving you access to a range of 'Software as a Service' (SaaS) applications*², developed by Sharp's technology partners.

Plus, you can specify the optional Web Browsing Kit, which gives you full internet access direct from the MFP's touch screen control panel.

*¹ Requires optional MX-FR33 or MX-FR33U.

*² Please check availability of Sharp OSA applications.

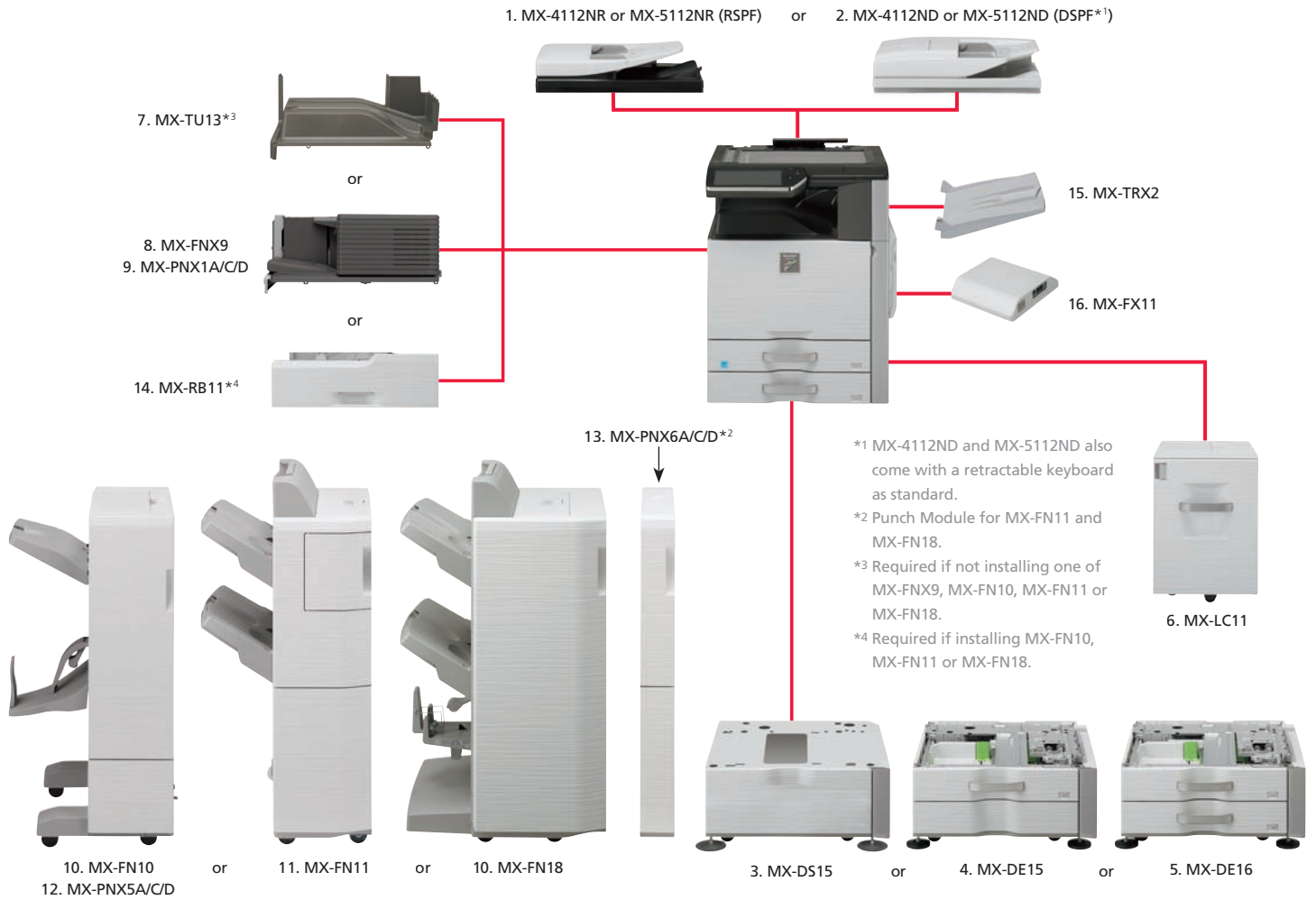


Energy-saving
Technology for
Low Running Costs



Engineered to
the Highest
Standards

MX-4112N / MX-5112N options



Configuration examples



Base Unit
Finisher (MX-FNX9)
Stand with 2 x 500-Sheet
Paper Drawers / Exit Tray



Base Unit
1K Saddle Stitch Finisher (MX-FN10)
Punch Module (MX-PNX5A/C/D)
Stand with 2 x 500-Sheet Paper Drawers
Paper Pass Unit / Exit Tray / Large Capacity Tray



Base Unit
4K Saddle Stitch Finisher (MX-FN18)
Punch Module (MX-PNX6A/C/D)
Stand with 2 x 500-Sheet Paper Drawers
Paper Pass Unit / Exit Tray / Large Capacity Tray



Multiple
Configurations
Available



Retractable
Keyboard
Option

MX-4112N / MX-5112N options

Base unit

MX-KB11 Keyboard

- Standard on MX-4112ND and MX-5112ND

- MX-4112NR/MX-5112NR** 100 Sheet Reversing Single Pass Feeder
- MX-4112ND/MX-5112ND** 150 Sheet Duplex Single Pass Feeder
- MX-DS15** Stand for MFP Height Adjustment
- MX-DE15** Stand with 1 x 500-Sheet Paper Drawers
 - A3 to B5R, 500 sheets each (80 gsm) for lower and upper trays
- MX-DE16** Stand with 2 x 500-Sheet Paper Drawers
 - A3 to B5R, 500 sheets each (80 gsm) for lower and upper trays
- MX-LC11** Large Capacity Tray
 - A4 to B5, 3500 sheets (80 gsm)

Finishing

7. MX-TU13 Exit Tray Cabinet Unit

- Required when not ordering either MX-FNX9, MX-FN10, MX-FN11 or MX-FN18

8. MX-FNX9 Finisher

- A3W to A5R (non offset), A3 to B5 (offset/staple)
- Offset tray (upper): max. 500-sheet paper capacity*1
- Stapling capacity: max. 50-sheet multi-position staple*1
- Staple position: 3 locations (front, rear or 2 point stitching)

9. MX-PNX1A/C & D 2/4 Hole & 4 Hole-Wide Punch Module

- Optional Punch Module for MX-FNX9

10. MX-FN10 1000-Sheet Saddle Stitch Finisher

MX-FN18 4000-Sheet Saddle Stitch Finisher

- A3 to B5 (offset/staple), A3W to A5R (non offset)
- Offset tray (upper): max. 1000/4000-sheet paper capacity*1
- Stapling capacity: max. 50-sheet multi-position staple*1
- Staple position: 3 locations (front, rear or 2 point stitching)*1
- Saddle stitch tray (lower): 10 sets (11-15 sheets), 15 sets (6-10 sheets), 20 sets (1-5 sheets). 15 sheets max per set

11. MX-FN11 4000-Sheet Finisher

- A3 to B5 (offset/staple), A3W to A5R (non offset)
- Upper Tray: max. 1550-sheet paper capacity*1
- Lower Tray: max. 2450-sheet paper capacity*1
- Stapling capacity: max. 50-sheet multi-position staple*1
- Staple position: 3 locations (front, rear or 2 point stitching)*1

12. MX-PNX5A/C & D 2/4 Hole & 4 Hole-Wide Punch Module

- Punch Module for MX-FN10

13. MX-PNX6A/C & D 2/4 Hole & 4 Hole-Wide Punch Module

- Punch Module for MX-FN11 and MX-FN18

14. MX-RB11 Paper Pass Unit

- Required when using MX-FN10, MX-FN11 and MX-FN18

15. MX-TRX2 Exit Tray Unit

Faxing

16. MX-FX11 Super G3 Fax Expansion Kit Module

MX-FWX1 Internet Fax Expansion Kit

Printing

MX-PK11 PS3 PostScript Printing Expansion Kit

MX-PUX1 XPS Expansion Kit (L80MXSM10 required)

L80MXSM10 Expansion Memory Board

MX-PF10 Barcode Font Kit

MX-AM10 Web Browsing Expansion Kit*2

- Enables browsing of Internet from MFP panel

Scanning

AR-SU1 Stamp Unit

- Marks already scanned documents for checking

MX-EB11 Enhanced Compression Kit

- Enables creation of high compression PDFs

Security

MX-FR33 Data Security Kit*2

- Common Criteria validated version

MX-FR33U Data Security Kit

- Commercial version

MX-EB12 Mirroring Kit Second Hard Drive*2

- Enables data backup of files stored on HDD

Sharpdesk™ licenses

MX-USX1 Sharpdesk 1-License Kit

MX-USX5 Sharpdesk 5-License Kit

MX-US10 Sharpdesk 10-License Kit

MX-US50 Sharpdesk 50-License Kit

MX-USAO Sharpdesk 100-License Kit

Sharp OSA®

MX-AMX1 Application Integration Module

MX-AMX2 Application Communication Module

MX-AMX3 External Account Module

Sharp OSA® Network Scanner Tool Licenses*2 (MX-AMX2 required)

MX-UN01A Sharp OSA 1-License Kit

MX-UN05A Sharp OSA 5-License Kit

MX-UN10A Sharp OSA 10-License Kit

MX-UN50A Sharp OSA 50-License Kit

MX-UN1HA Sharp OSA 100-License Kit

*1 A4 or smaller, 80 gsm.

*2 Available at a later date.

Note: Some options may not be available in some areas.

Specifications

MX-4112N / MX-5112N
Digital Full Colour Multifunctional System



General			
Engine speed (ppm/cpm)			
	MX-5112N:	A4 Colour: 51 A3 Colour: 23	A4 B/W: 51 A3 B/W: 23
	MX-4112N:	A4 Colour: 41 A3 Colour: 19	A4 B/W: 41 A3 B/W: 19
Paper size	Max/min:	A3 wide/A5R	
Paper weight	Drawer:	60-220 gsm	
	Bypass:	55-256 gsm	
Paper capacity	Std:	1100 sheets (2 x 500-sheet drawers and 100-sheet multi-bypass tray)	
	Max:	5600 sheets (4 x 500 sheet trays, 100 sheet multi-bypass tray and 3500 sheet large capacity tray)	
Warm-up time*1			
	MX-5112N:	34 sec.	
	MX-4112N:	30 sec.	
Memory	Standard:	3 GB (copier/printer shared)	
	Option:	1 GB (printer)	
HDD capacity*2		160 GB	
Power requirements		Rated local AC voltage $\pm 10\%$, 50 / 60 Hz	
Power consumption	Max:	1.84 kW (200 to 240 V)	
Dimensions (wdh)	RSPF:	643 x 761 x 952 mm	
	DSPF:	643 x 761 x 966 mm	
Weight	MX-5112N RSPF:	Approx. 119 kg	
	MX-5112N DSPF:	Approx. 127 kg	
	MX-4112N RSPF:	Approx. 118 kg	
	MX-4112N DSPF:	Approx. 126 kg	
Copier			
Original paper size	Max:	A3	
First copy time*3			
	MX-5112N:	Colour: 5.7 sec.	B/W: 4.1 sec.
	MX-4112N:	Colour: 6.7 sec.	B/W: 4.7 sec.
Continuous copy	Max:	999 copies	
Resolution	Colour scan:	600 x 600 dpi	
	B/W scan:	600 x 600, 600 x 400 dpi (not available with RSPF installed)	
	Print:	600 x 600, 9600 (equivalent) x 600 dpi*3 (depending on print mode)	
Gradation		Equivalent to 256 levels	
Zoom range		25 to 400% (25 to 200% using optional RSPF/DSPF) in 1% increments	
Preset copy ratios		10 ratios (5R/5E)	
Colour Network Scanner			
Scan method	Push scan:	Via operation panel	
	Pull scan:	With TWAIN-supporting application	
Resolution	Push scan:	100, 150, 200, 300, 400, 600 dpi	
	Pull scan:	75, 100, 150, 200, 300, 400, 600 dpi, 50 to 9600 dpi*4	
File formats		XPS*5, PDF, Encrypted PDF, JPEG, TIFF, Compact PDF*6, PDF/A	
Scanner utilities		Network Scanner Tool, Sharpdesk	
Scan destinations		Scan to e-mail, desktop, FTP server, network folder (SMB), USB memory, i-Fax*7	
Document Filing Capacity			
Document filing			
	Main and custom folders:	71 GB, 20,000 pages*8 or 3000 files	
	Quick file folder:	10 GB, 10,000 pages*8 or 1000 files	
Stored jobs		Copy, print, scan, fax transmission*9	
Storage folders		Quick folder, main folder, custom folder (max. 1000 folders)	
Confidential storage		Password protection (for main and custom folders)	
Network Printer			
Resolution		1200 x 1200, 600 x 600 dpi, 9600 (equivalent) x 600 dpi*4	
Interface		USB 2.0 high speed, 10Base-T/100Base-TX/1000Base-T	
Supported OS*10	Standard:	Windows 2000/XP, Windows Server 2003/2008/2008R2, Windows Vista, Windows 7	
	Optional:	Mac OS 9.0-9.2.2, Mac OS X 10.2.8, 10.3.9, 10.4.11, 10.5-10.5.8, 10.6-10.6.5	
Network protocols*10		TCP/IP (IPv4 & IPv6), IPX/SPX (Netware), NetBEUI, EtherTalk (AppleTalk)	
Printing protocols		LPR, Raw TCP (port 9100), POP3 (e-mail printing), HTTP, Novell Printserver application with NDS and Bindery, FTP for downloading print files, EtherTalk printing, IPP	
PDL emulation	Standard:	PCL 6	
	Option*11:	PS3 emulation, XPS	
Available fonts		80 fonts for PCL, 136 fonts for PS3 emulation*11	
Facsimile			
		(optional MX-FX11 required)	
Compression method		MH/MR/MMR/JBIG	
Communication protocol		Super G3/G3	
Transmission time		Less than 3 seconds*12	
Modem speed		Modem speed 33,600 bps to 2400 bps with automatic fallback	
Transmission resolution	Standard:	203.2 x 97.8 dpi	
	Ultra Fine:	406.4 x 391 dpi	
Recording width		A3-A5	
Memory		1 GB	
Grey scale levels		Equivalent to 256 levels	



*1 At rated voltage. May vary depending on machine conditions and operating environment.

*2 1 GB = One billion bytes when referring to hard drive capacity. Actual formatted capacity is less.

*3 Best achieved time based on A4 copy, long-edge feeding from 1st paper drawer, using document glass, when machine is ready, without Auto Colour Mode and Auto Colour Selection. May vary depending on machine conditions and operating environment. *4 Resolutions higher than 600 dpi are interpolated. *5 To view XPS files on PCs not running Windows Vista, you must have the XPS View application installed. *6 Requires optional MX-EB11. *7 Optional MX-FWX1 required.

*8 Measured using Sharp's standard chart (A4 with 6% coverage, B/W). The Quick File folder shares the HDD *9 Optional MX-FX11 required. *10 Optional MX-PK11 required for Mac OS, EtherTalk and PS3. *11 PS3 requires optional MX-PK11. XPS requires optional MX-PUX1 and L80MXSM10.

*12 Based on Sharp's standard chart with approx. 700 characters (A4 portrait) at standard resolution in Super G3 mode, 33,600 bps, JBIG compression.

Design and specifications are subject to change without prior notice. All information was correct at time of print. The ENERGY STAR logo is a certification mark and may only be used to certify specific products that have been determined to meet the ENERGY STAR programme requirements. ENERGY STAR is a US registered mark. The ENERGY STAR guidelines apply to products only in the US, Europe, Australia, New Zealand and Japan. Windows, Windows NT, Windows XP and Windows Vista are registered trademarks of Microsoft Corporation. All other company names, product names and logos are trademarks or registered trademarks of their respective owners. ©Sharp Corporation June 2011. Ref: MX-4112N/MX-5112N. All trademarks acknowledged. E&OE.

MX-4112N / MX-5112N
Digital Full Colour Multifunctional System



SHARP
/This is Why

Sharp Electronics (UK) Ltd
4 Furzeground Way, Stockley Park,
Uxbridge, Middlesex, UB11 1EZ
Tel: 020 8734 2000 Fax: 020 8734 2400
Website: www.sharp.co.uk