



**imageRUNNER
iR3025 / iR3030**

Empower every member of your office



Built for the department, designed for the individual

Versatility to meet the needs of any office

The imageRUNNER iR3025 and iR3030 take innovation and versatility to a whole new level, with a host of next-generation technologies that turn complex tasks into streamlined workflows.

In addition to the latest print, copy, fax and scan features, these devices come equipped with comprehensive security features to protect information, Canon's MEAP technology for customising device functionality, and options such as Canon Universal Send for efficient document distribution.

With all these features plus the latest in printing technology, the iR3025 and iR3030 deliver a new element of personalisation to meet the workflow needs of every user in your office or corporate workgroup.



Compact and convenient

Printing and copying at speeds of up to 25 and 30 pages per minute respectively, the compact iR3025 and iR3030 devices are the ideal choice for office environments where space is at a premium. Consolidate digital copying, scanning, faxing, and document storage into a single solution and add optional network printing to use the device as a shared printer.

Powerful performance

Powered by Canon's advanced imageCHIP (Concurrent Hyper Intelligent Platform) technology, the iR3025 and iR3030 deliver exceptional performance with the power to execute simultaneous copying, printing, scanning, sending, and faxing tasks. Canon's On-Demand fusing technology also helps busy workgroups stay productive by keeping power consumption to a minimum while providing near-instant warm up times.

Large paper capacity

To increase productivity and make light work of large print runs, the standard 1,150 sheet capacity can be boosted to 4,950 sheets. With the option of a duplexing 50 sheet automatic document feeder, you will be able to scan multi-page and different-size originals with ease.

Professional finishing

With a wide range of finishing options, the iR3025 and iR3030 provide a cost-effective way of bringing professional document production in-house. Choose from simple collation, stapling and hole punching, through to more advanced finishing like stacking and automatic saddle-stitched booklet making.

Fast Super G3 fax option

The Super G3 Fax option saves you time and significantly reduces fax line charges. It also offers PC Fax capability for convenient faxing from the desktop. Faxes can also be automatically received into one of up to 50 confidential Inboxes for convenience and security.

Long-lasting supplies

To ensure maximum system uptime and minimal user maintenance, the iR3025 and iR3030 utilise high-yield and easily accessible consumables such as set-on toner bottles for easy cleaning and hassle-free replacement.

Multifunction features:

- Print and copy at up to 25ppm (iR3025) or 30ppm (iR3030)
- 2,400 x 600 dpi print resolution (maximised)
- Large 4,950 sheet paper capacity
- Optional 50 sheet automatic document feeder
- Optional Super G3 fax



Hassle-free
toner replacement



Designed with productivity in mind

Advanced features made simple

Even with all the advanced features that the iR3025 and iR3030 possess, the first thing you'll notice is just how simple these devices are to use.

From their large colour touch-screen displays to their convenient web-based desktop user interface, Canon have designed the iR3025 and iR3030 so even the most novice user can take advantage of their advanced capabilities. With features that help simplify operation, streamline complex tasks and facilitate information sharing, these devices ensure every user in your office completes the job the first time.



A breeze to use

Ease of use starts with the easy-to-read, full-colour touch panel, interactive on-board help menus, plus user-friendly documentation and tutorial tools for beginners and advanced users alike. Using the Remote Operator's Software Kit, users can have full access to imageRUNNER functions, right from their laptop or desktop PC screen.

Users with visual or motor impairments can also operate the device using spoken commands or receive audible confirmation of selected functions with the optional Voice Operation Kit.

Increased task efficiency

With the new Workflow Composer option, users can register one key with all the settings necessary to perform an entire task or workflow. For even greater convenience, the system can be configured to display and enable only the Workflow Composer buttons registered to each individual.

Innovative copy features

Copy features such as Express Copy help speed up job programming and complete document sets. The new Job Block Combination feature simplifies the production of complex documents by scanning and merging multiple batches of originals saved with different settings. For example, this feature enables a 2-sided job and 1-sided job to be merged and stapled as one job.

* Requires the optional printer kit

Enhanced document storage

To streamline document storage, the enhanced Mail Box feature allows each Mail Box to be personalised with a user name, password and document deletion period. New Copy & Store and Store & Print functions ensure that a quality digital original is automatically archived. With optional Universal Send installed, documents can be retrieved and distributed in file formats such as TIFF and PDF.

On-device web access

Canon's Web Access Software option* allows documents on internet or intranet sites to be viewed directly from the device's full-colour touch-panel display, and then printed with the desired settings.

Improved information sharing

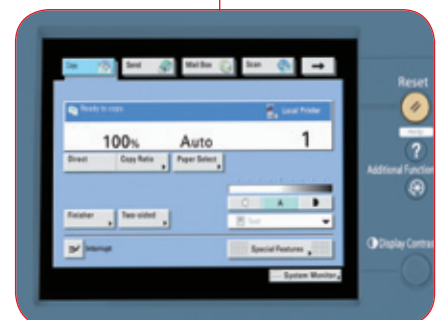
The new Web-based Distributed Authoring and Versioning (WebDAV) protocol allows users to communicate from remote locations by scanning and securely sending documents from an iR3030 or iR3025 device to a shared storage service over the Internet.

Print with confidence

The optional UFR II/PCL Printer Kit-S1 offers support for PCL 5e and PCL6 emulations, and includes Canon's UFR II (Ultra Fast Rendering) print driver language for efficient processing between printer and driver. Users who prefer Postscript workflows can use the Postscript 3 driver.

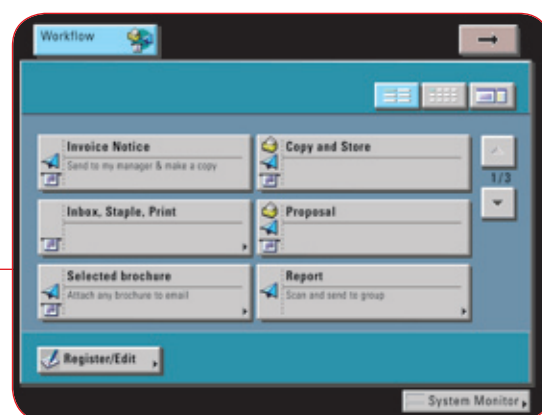


Voice Operation Kit



Large colour touch screen makes operation simple

Workflow Composer Menu



Comprehensive control and security

Easy to monitor, manage and protect

Device administration can be a time consuming and costly activity, but with the powerful, yet easy-to-use management tools available for the iR3025 and iR3030, managing your imageRUNNER device is a breeze. Whether you are running a large imageRUNNER fleet spread over multiple locations or managing a single device in a small office, these tools will make device management easy and efficient so you can focus on more important tasks.

Security is another major concern, especially for organisations that deal with sensitive information. With the iR3025 and iR3030, you can choose from a variety of document, device and data security features to help maintain security and meet your organisation's compliance obligations. Your business can rest assured knowing only authorised personnel will have access to your imageRUNNER device and the data stored inside it.



Centralised device management

Canon's imageWARE Management Console is a Web-based utility that facilitates centralised management of networked devices. Versatile and scalable, imageWARE Management Console enables remote management of imageRUNNER device settings, discovery of new devices using automated tasks, and device error notification via e-mail.

With the Device Information Delivery function you can specify which users have access to the device and its functions, replicate device settings and copy Address Books to multiple devices for easy management of devices across the network.

For even greater control, the preinstalled Remote UI utility provides the ability to track the progress of jobs in queues, monitor paper and supply levels, access Mail Boxes and edit Address Books.

Embedded remote monitoring software

Canon's optional eMaintenance service is a remote device management solution designed to optimise the productivity of your imageRUNNER device and help save your business time and money. Using Remote Diagnostic System (RDS) software embedded in the iR3025 and

iR3030 devices, eMaintenance allows a dedicated Canon server to collect automatic device meter readings and monitor maintenance requirements and device performance remotely.

Robust device security

Secured Print: Use this feature to set a password for highly sensitive or confidential files to ensure the job does not start printing until a password is entered at the device.

Department ID Management:

By registering a Department ID and password for each department, this feature allows you to control costs by setting volume limits on copy, scan, and print jobs for up to 1,000 departments.

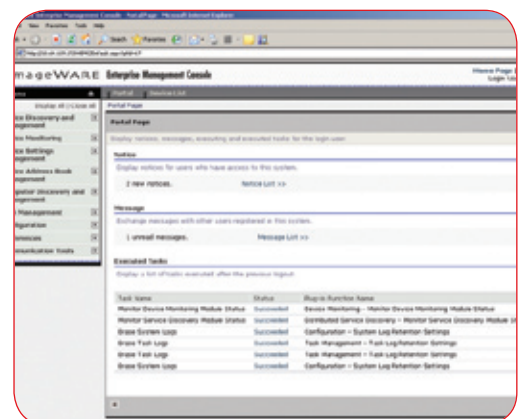
Single Sign On: This feature helps you control access to imageRUNNER functions by prompting users for the same username and password they use to access other network devices like their PC.

Advanced document and data security

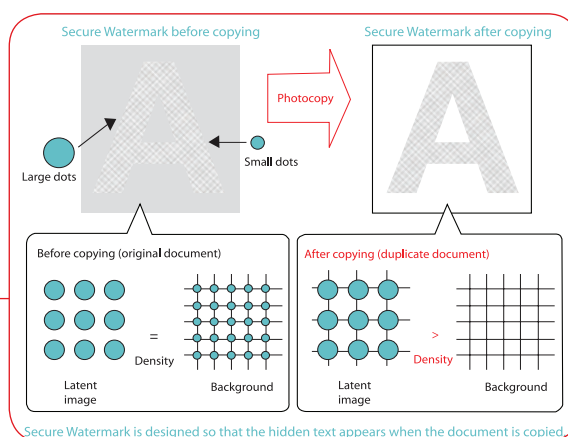
Secure Watermark: This optional feature embeds text and background patterns on printed documents. These become visible if the page is reproduced, deterring users from copying sensitive information.

HDD Encryption Kit: This optional kit is Common Criteria certified and applies a powerful 128-bit data encryption algorithm to the data as it is written to the internal hard drive.

HDD Erase Kit: This optional kit uses three levels of disk overwriting to permanently remove data from the hard disk once printed, making it impossible to recover this data after completion of the print job.



imageWARE Management Console



Secure Watermark is designed so that the hidden text appears when the document is copied

Secure Watermark

Fast, secure and inexpensive Universal Send

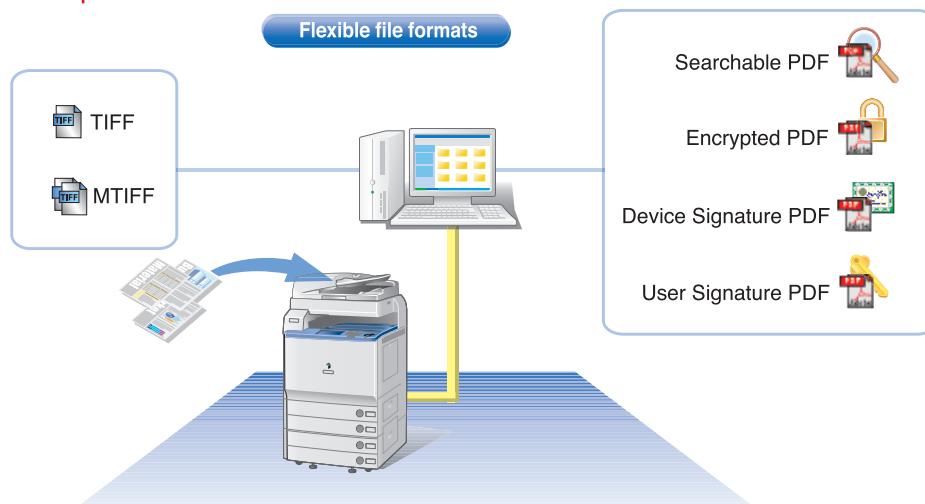
Scan, save and send in one step

Canon Universal Send is an optional feature that provides a fast, secure and inexpensive way to distribute documents in electronic form direct from an imageRUNNER's touch-screen display.

This unique technology enables you to scan, save and send documents in common electronic formats including PDF and TIFF automatically. In one step you can scan a document and:

- Email it to an individual or group
- Save it on your network
- Store it in an imageRUNNER mailbox
- Send it as an iFAX over the internet
- Send it to a folder on your desktop

Canon's Universal Send offers the widest range of file formats of any MFD device, giving you total flexibility.



Device Signature PDF

When you create a PDF with Universal Send, this optional feature embeds a digital signature within the PDF that allows the user to verify the originating device.

User Signature PDF

Another Universal send option, this feature allows users to embed their own digital signature in a scanned PDF so that recipients can verify the source and easily determine if the document has been tampered with.

Find information fast

The Searchable PDF option makes it easy to find information later using Adobe Acrobat. Select searchable PDF to save a document as full-text searchable automatically.

Share information securely

Password protect documents before sending with the optional PDF-encryption feature, preventing unauthorised printing or editing. Tag and track documents with the Send ID feature.

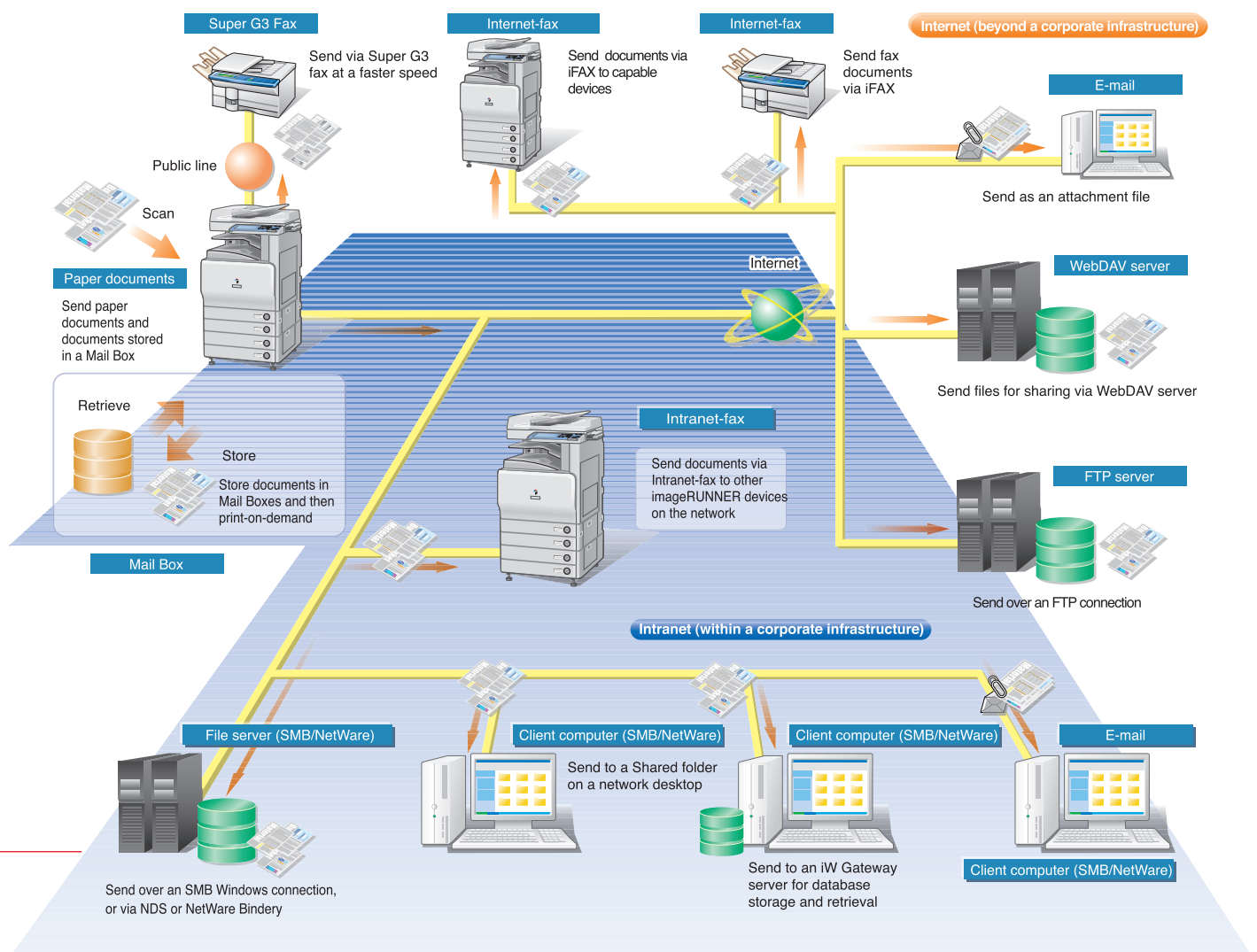
Handy built-in mailboxes

imageRUNNER mailboxes are a convenient place to store things like frequently used forms for printing on demand. Set up to 100 mailboxes and store 6,000 pages of information.

Advanced mailbox features

Use the advanced features to edit and merge documents on the device before sending or printing. Use URL Send to reduce network congestion by sending a URL link rather than the document itself.

Flexible electronic document distribution with Universal Send



Simplify business with an electronic document workflow

Technology that adapts to the way you work



MEAP or Multifunctional Embedded Application Platform is a unique software platform that enables applications to be installed and run on an imageRUNNER.

This breakthrough Java-based open-platform technology makes business more efficient by transforming the behaviour of an imageRUNNER to suit your organisation's processes.

Put simply, MEAP is like an operating system for imageRUNNER devices. With it both customised and off-the-shelf MEAP applications can be installed on a device and accessed from its touch-screen display or built-in web browser.



Customise functions

With MEAP, you can customise the functions of an imageRUNNER and add-on devices like proximity card readers. As an example, you can use it to customise a device to deal with different documents in different ways automatically.

Automate processes

Depending on the application, MEAP can simplify complex document processing chores, automate tasks like document management and facilitate advanced functionality. The potential for adaptation is virtually limitless.

Ready-made or custom applications

The versatility of the MEAP platform enables you or your choice of developer to create custom software applications specifically for your organisation. Alternatively, choose from a growing range of packaged MEAP applications from Canon. These include:

Secure Print for MEAP. This unique application protects sensitive information and reduces waste by requiring staff members to swipe their building access cards at an imageRUNNER to release their print jobs.

Secure Login for MEAP. With this application you can control access to the copy, scan, email and fax functions of an imageRUNNER. Detailed information about device usage is stored in a log for direct upload to a cost accounting system.

Secure Fax for MEAP. This application uses existing building access cards to control access to the fax function of an imageRUNNER. Connecting directly to your existing fax server, it also saves money as no fax card is required to send faxes from the device.

Canon Document Solutions software

Teamed with an imageRUNNER, these software applications simplify the way your organisation stores, accesses and distributes documents.

Each of Canon's seven software categories includes a selection of applications to meet the requirements of any organisation. Most can be implemented straight from the box or customised to suit.

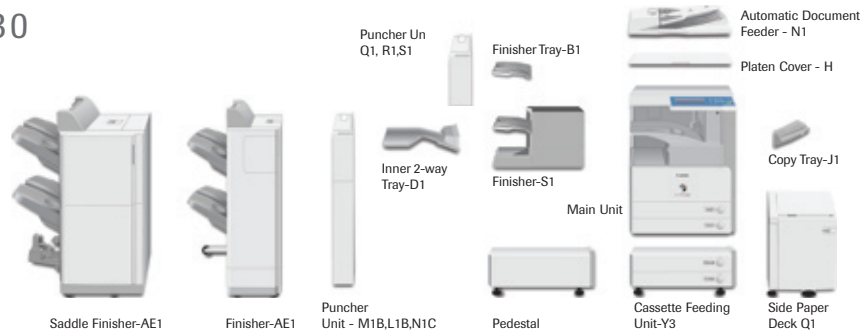
MEAP applications can be operated directly from the LCD touch-screen panel



Produce professional-looking booklets with the saddle finisher option

imageRUNNER iR3025 / iR3030

Specifications



TYPE:	DIGITAL, MULTIFUNCTION IMAGING SYSTEM
Imaging System:	Laser Dry Electrostatic Transfer
Developing System:	Dry Mono Component Developing System
Fixing System:	On-Demand
Image Server Memory:	Standard 512MB RAM/20GB HDD
First-copy Time:	Approx. 4.9/4.2 Seconds from Platen Glass
Warm-up Time:	Approx. 10 Seconds from Sleep Mode Approx. 30 Seconds from Main Power Off
Copy/Print Speed:	25/30 ppm (A4)
Max. Mail Boxes Supported:	100
Max. Copy Reservation:	5 Jobs
Resolution:	
Scan:	600 dpi x 600 dpi
Print:	2400 dpi x 600 dpi (equivalent)
Copy:	1200 x 600
Halftone:	256 Gradations of Gray
Duplexing:	Standard Automatic Trayless Duplexing
Magnification Reduction/Enlargement:	25% to 400% – Platen 25% to 200% – Feeder (in 1% increments)
Exposure Control:	Automatic or Manual (9 Levels)
Paper Sources	
Standard:	Dual 550-sheet Paper Cassettes (1,100 Sheets) Stack Bypass (50 Sheets) 2,500-sheet Paper Deck Dual 550-sheet Cassette Feeding Unit Max. total = 4,750 sheets
Optional:	
Multiple Copies:	1 to 9,999
Paper Weights:	64-90gsm (Cassette) 64-128gsm (Stack Bypass)
Network Interface	
Connections:	10/100Base-T (RJ-45)
Dimensions (H x W x D):	761 mm x 565 mm x 700 mm
Installation Space: (W x D):	930 mm x 115 mm
Weight:	86.2 kg
Power Requirements:	230v/6a/50Hz
Power Consumption:	1.35 kW (Max.)
Drum:	Organic Photo Conductor (OPC) – Estimated Yield: 75,000 Impressions
Toner Yield:	21,000 @ 6% Coverage
DUPLEXING AUTOMATIC DOCUMENT FEEDER-N1 (OPTION)	
Acceptable Originals:	A5R-A3
Capacity:	50 Sheets (80gsm)
Max. Paper Weight:	64-128gsm
INNER 2-WAY TRAY-D1 (OPTION)	
Number of Trays:	1 Tray
Tray Capacity:	
Lower Output Tray (Standard):	250 Sheets (A4)

Upper Output Tray:	100 Sheets (Other Sizes) 100 Sheets (A4) 50 Sheets (Other Sizes)
Acceptable Paper Sizes:	A5R-A3
Attachable Accessories:	Copy Tray-J1
FINISHER-S1 (OPTION)	
Number of Trays:	1 Tray (2nd Tray Optional)
Tray Capacity	
Non-collate, Collate,	
Group Mode:	1,000 Sheets (A4)
Staple Mode:	1,000 Sheets/30 Sets
FINISHER TRAY-B1 (OPTION FOR FINISHER S1)	
Tray Capacity:	300 sheets (A4) Per tray 150 sheets (A3) Per tray
FINISHER-S1 TRAY CAPACITY WITH ADDITIONAL FINISHER TRAY-B1	
Non-collate, Collate	600 A4-300 A3
Group Mode:	300 Sheets per Tray (A4)
Staple Mode:	300 Sheets/30 Sets per Tray (A4) 150 Sheets/30 Sets (A3)
Staple Position/Size:	Corner Stapling (A4-A3)
Max. Stapling Capacity (Up to 80gsm. Bond):	50 Sheets (A4)
Attachable Accessories:	Puncher Unit-R1, Q1, S1
COPY TRAY-J1 (OPTION FOR INNER 2-WAY TRAY-D1 OR FINISHER-S1)	
	150 sheets (A4) 75 sheets (A3)
FINISHER-AE1/SADDLE FINISHER-AE2 (OPTION)	
Number of Trays:	2 Trays
Tray Capacity	
Non-collate, Collate, and Group Mode:	1,000 Sheets (A4) 500 Sheets (A3)
Staple Mode:	1,000 Sheets/30 Sets (A4) 500 Sheets/30 Sets (A3)
Max. Stapling Capacity	
Corner, Double:	50 Sheets (A4), 30 Sheets (A3)
Saddle-stitching	(Available on Saddle Finisher-Q4 Only)
Acceptable Paper Sizes:	A4R-A3
Capacity/Tray:	1 to 5 Sheets/25 Sets 6 to 10 Sheets/15 Sets 11 to 15 Sheets/10 Sets
Max. Stapling Capacity/Set:	15 Sheets
Folding:	V-fold
Attachable Accessories:	Puncher Unit- M1B,L1B,N1C
CASSETTE FEEDING UNIT-Y3 (OPTION)	
Paper Capacity:	Dual 550-sheet Paper Cassettes (1,100 Sheets/80gsm)
Acceptable Paper Sizes:	A5R-A3
Acceptable Paper Weights:	64-90gsm

PAPER DECK-Q1 (OPTION)	
Paper Deck Capacity:	2,500 Sheets (80gsm)
Paper Size:	A4
Acceptable Paper Weights:	64-90gsm
MULTI-PDL PRINTER KIT-S1 (OPTION)	
Processor:	Canon Custom Processor-Shared
RAM:	512MB-Shared
Hard Disk:	20GB-Shared
PDL Support:	PCL 5e, PCL 6, PostScript 3 Emulation, UFR II
INTERFACE CONNECTIONS	
Standard:	RJ-45 (10/100Base-T), USB 2.0 High-speed
Network OS:	Windows® 98/Me/2000/XP Windows NT® 4.0/Server 2003 Macintosh® OS 8.0 or Later (PPD) Solaris™ 1.1x, 2.5x or Later Novell® NetWare® v3.2, 4.1, 4.11, 4.2, 5, 5.1, 6, 6.5 (IPX/SPX™)
UNIVERSAL SEND KIT-B1 (OPTION)	
Sending Methods:	E-mail, iFAX, Super G3 Fax (Optional), User Inbox, File Server (IPX, FTP, SMB)
Address Book Capacity:	Max. 1,800 Destinations Max. 5 LDAP Servers
File Format:	MTIFF, TIFF, PDF, Optional PDF (OCR)
SUPER G3 FAX BOARD-Q1 (OPTION)	
Applicable Line:	Public Switched Telephone Network (PSTN)
Connection Lines:	One
Sending/Original Sizes:	A5R-A3 (from Document Feeder)
Recording/Printing Sizes:	A5R-A3
Compression System:	MMR, MR, MH, JBIG
Auto Dial Function:	Address Book: 1,800 Destinations (Total)
Image Memory:	Approx. 3,700 pages (Sourced from HDD)
Max. Confidential Fax Inboxes:	100
ADDITIONAL OPTIONAL ACCESSORIES AND UTILITIES	
Platen Cover Type H	Puncher Unit-L1B,M1B,N1C
Pedestal	Document Tray-J1
Copy Tray-J1	Card Sets
Card Reader-C1	Secure PDF Kit- A1
Universal Send Kit G1	Envelope Feeder Attachment-C1
Searchable PDF Kit A1	HDD Erase kit - A1
Barcode Printing Kit - A1	Encrypted Printing Kit - C1
Secure Watermark Kit - A1	HDD Encryption Kit - B4
Signature PDF Kit - A1	
Web Access Software Kit - F1	
Voice Guidance Kit - B1	
Voice Operation Kit - A1	
DADF Access Handle - A1	
Remote Operator Kit - A2	
256 MB Memory Expansion	



imageRUNNER



* Approximate 3-second-per-page fax transmission time based on ITU-T No. 1 Chart (MMR, Standard Mode) at 33.6 Kbps modem speed when transmitting to another v. 34 machine. The Public Switched Telephone Network (PSTN) currently supports 28.8 Kbps modem speeds or lower, depending on telephone line conditions.

™ All company and/or product names are trademarks and/or registered trademarks of their respective manufacturers in their markets and/or countries. Canon reserves the right to change specifications without notice.

AUSTRALIA

Sydney

1 Thomas Holt Drive
North Ryde NSW 2113
Ph (02) 9805 2600
Fax (02) 9887 3137

Melbourne

33 Lakeside Drive
Burwood East VIC 3151
Ph (03) 9881 0000
Fax (03) 9881 0316

Brisbane

Southgate Corporate Park
18 Southgate Avenue
Cannon Hill QLD 4170
Ph: (07) 3909 5000
Fax: (07) 3909 5068

Adelaide

1 South Road
Thebarton SA 5031
Ph (08) 8201 9193
Fax (08) 8352 2810

Perth

68 Hasler Road
Osborne Park WA 6017
Ph (08) 9347 2258
Fax (08) 9242 4120

Canberra

98 Barrier Street
Fyshwick ACT 2609
Ph (02) 6206 5999
Fax (02) 6206 5933

NEW ZEALAND

Auckland

Akoranga Business
Park Akoranga Drive
Northcote
Ph (09) 489 0300
Fax (09) 489 0399